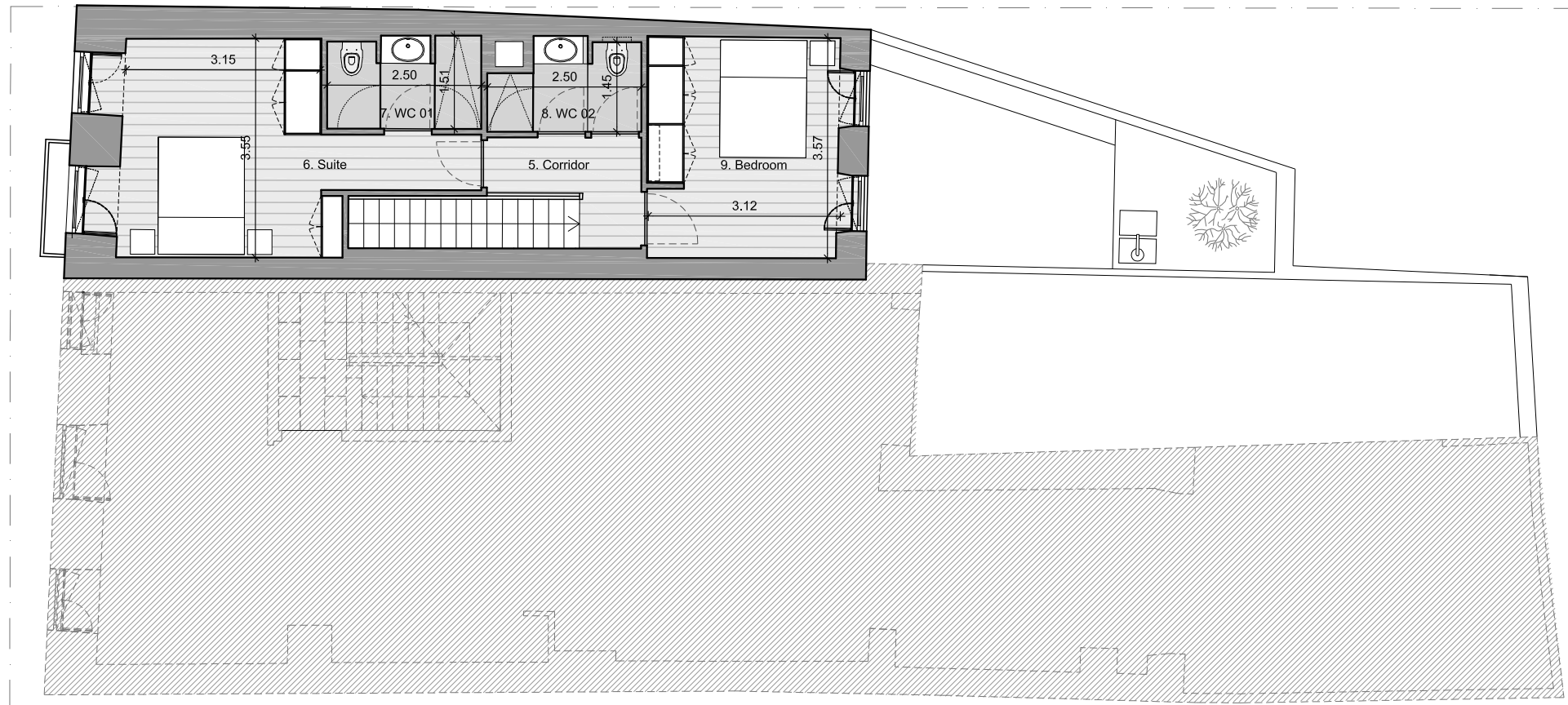


Rua de Campo de Ourique, 3-9



Apartment 1 . 1st Floor

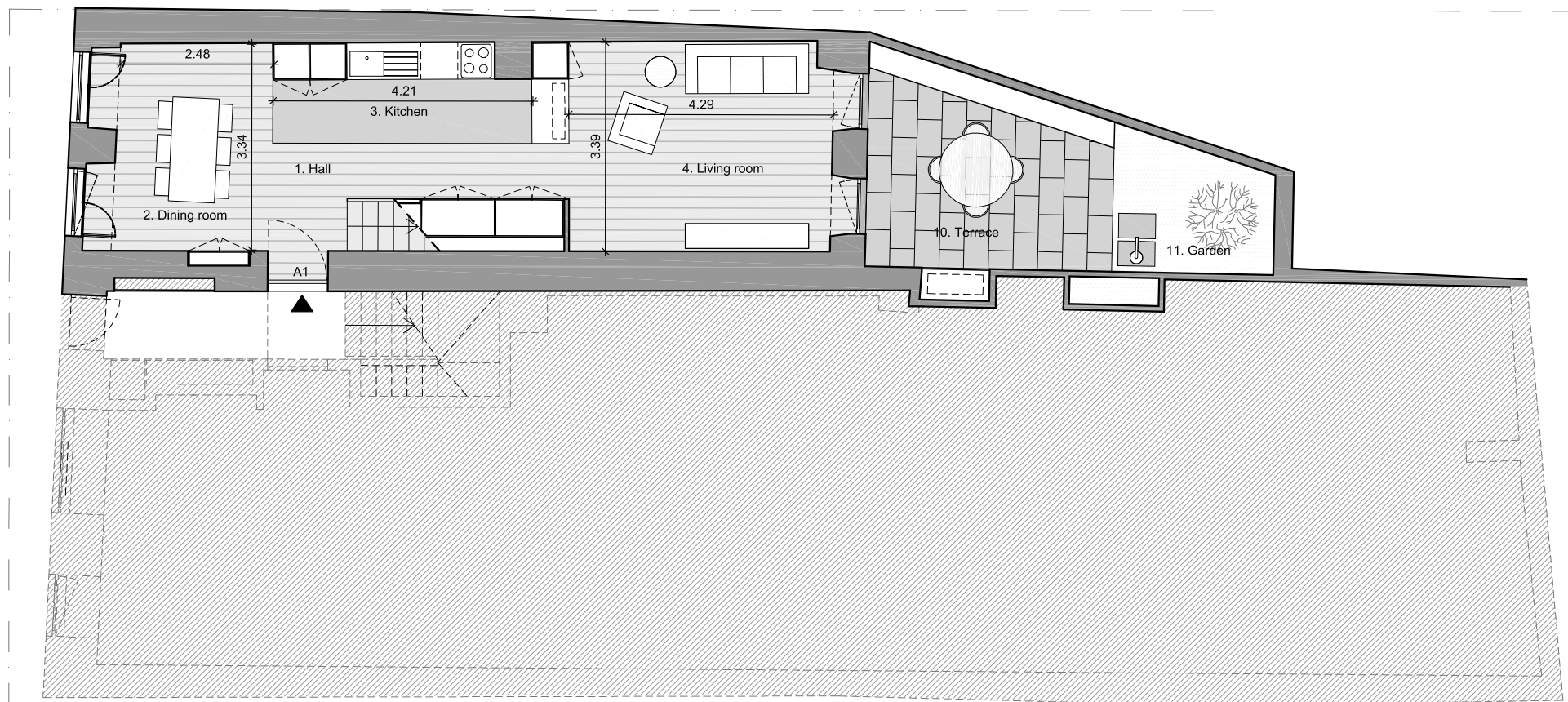
APT	TYPE	Floor
1	T2 Duplex	Groundfloor

AREAS

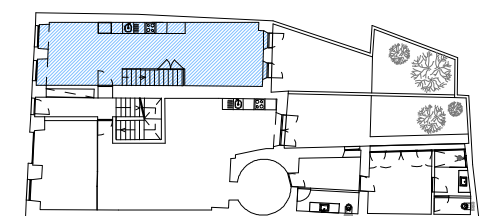
1 Hall	8.86m ²
2 Dining room	10.01m ²
3 Kitchen	7.50m ²
4 Living room	15.23m ²
5 Corridor	3.22m ²
6 Suite	15.37m ²
7 WC 01	3.63m ²
8 WC 02	3.31m ²
9 Bedroom	11.68m ²
TOTAL NET AREA	78.81 m²

GROSS AREA	107.85m²
-------------------	----------------------------

10 Terrace	12.14m ²
11 Garden	5.31m ²



Apartment 1 . Groundfloor



Groundfloor

Buyer	
Date	
Signature	

Groundfloor | Scale 1/100

